

Titan LMB65 Bronze Fire Monitor

Nominal flow 6,500 l/min @ 7 bar

The Angus LMB65 bronze fire monitor is a simple and reliable design with a hand lever for movement and hand locks in both the horizontal and vertical axis. Stainless steel ball race bearings are used for the horizontal and vertical movement.

Computer designed guide vanes cast into the body reduce turbulence and spin in the water stream lowering pressure loss and improving jet reach.

All Angus bronze monitors are based on a proven low maintenance design developed over 10 years of world-wide service.

Body materials

Bronze body to EN CC491K, equivalent to LG2, ASTM B30, and UNI 7013

Copper	Zinc	Lead	Tin
85%	5%	5%	5%

Steering arm – Carbon steel painted
Locking handles Duraplast on SS316 shafts

Bearing materials

Stainless steel (SS316) double ball race bearings on both axis with Viton seals rated up to 120°C

Inlet connection

Standard flange 4" ANSI 150 FF.
(DIN and non standard flange options available)

Outlet connection

3 1/2" BSP M (NH optional) or
150 x 150 square flange

Operating pressure

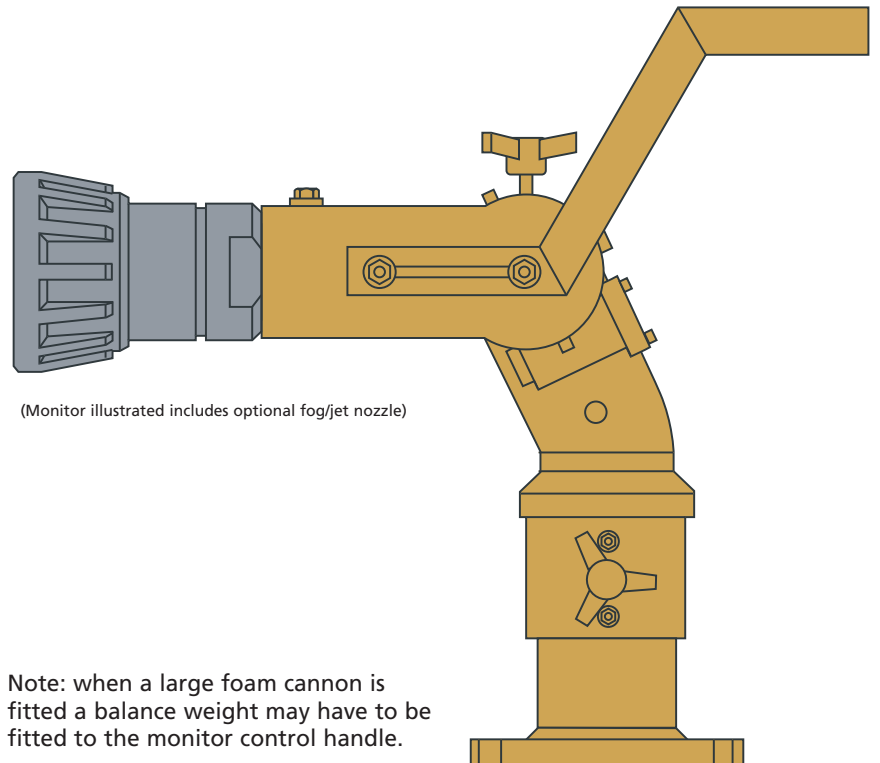
Design pressure 16 bar
Hydraulic factory test pressure 24 bar

Performance

Pressure loss at 6,500 l/min 2.4 bar.
(For pressure losses at other flow rates refer to the pressure loss graph.)

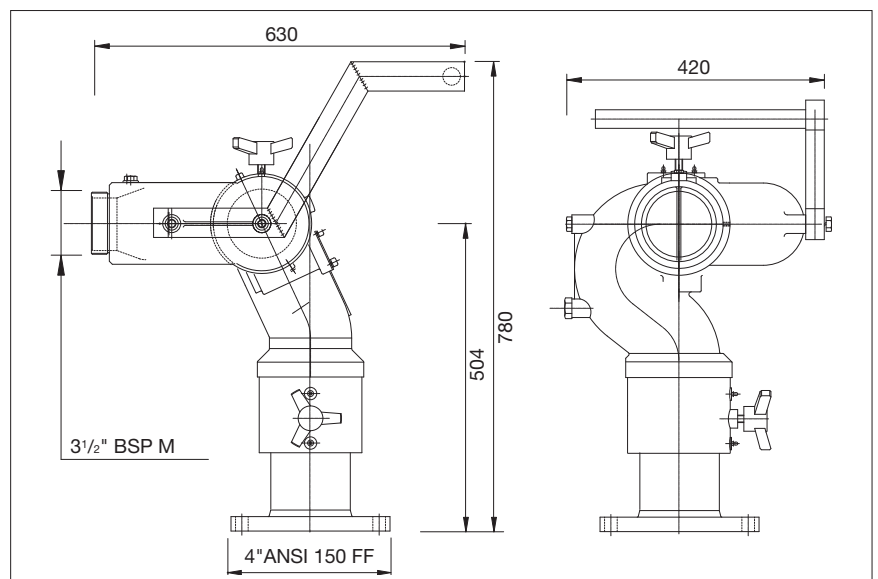
Weights and dimensions

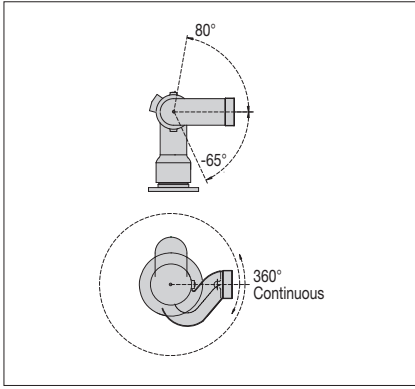
Weight 76 kg



(Monitor illustrated includes optional fog/jet nozzle)

Note: when a large foam cannon is fitted a balance weight may have to be fitted to the monitor control handle.



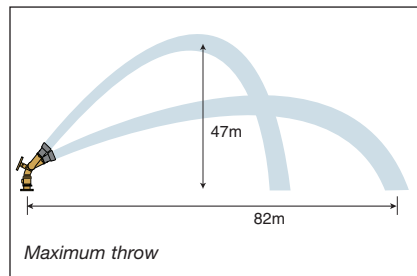
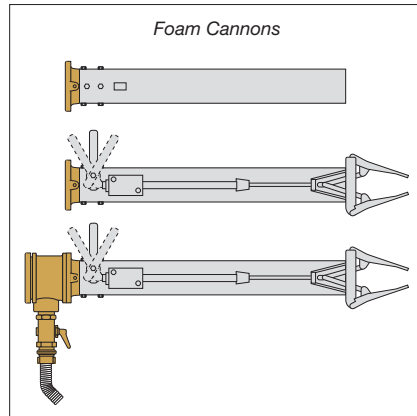
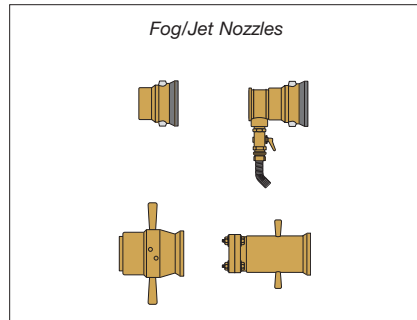
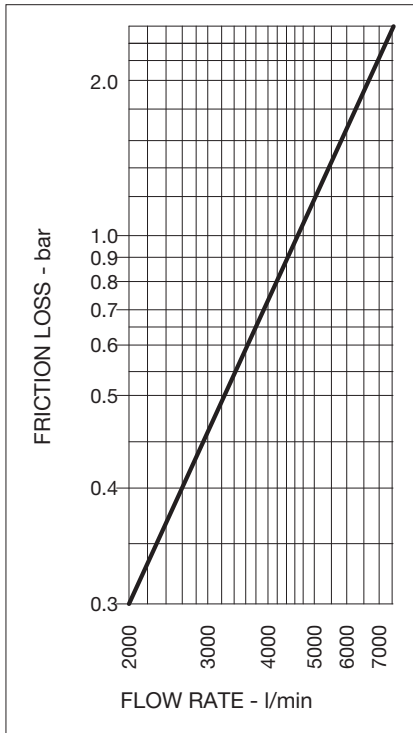


Movement

360° continuous rotation in the horizontal plane
+80° / -65° movement in the vertical plane

Optional paint finish

Surface preparation	Solvent cleaning
Primer coat	Epoxy 30µm
Intermediate coat	Epoxy grey 40µm
Finish coat	Polyurethane 40µm Red RAL3000
Total dry film thickness	110µm



Outlet nozzle options

Bronze bodies, manual controlled, fog/jet nozzles with shut off:

FJ20 range: 200 to 2000 l/min

Bronze bodies, manual controlled, fog/jet nozzles:

FJ 1300 to 6000 l/min

Stainless steel barrel with bronze base, aspirating foam cannons:

FC 800 to 7000 l/min

Stainless steel water jet pipes:

WC 1500 and 3000 l/min

A range of dry powder nozzles is also available – refer to Angus Fire

All foam cannons come with the option of a manually operated spreader.

All nozzles and branchpipes come with the option of a self inducing foam connection.

(For technical details of nozzles and branchpipes see separate data sheets.)

Length and height of monitor water jet

Maximum water throw 82m* at an angle of 32°

Maximum height 47m* at an angle of 75°

* Based on a FJ6000 nozzle, a flow of 6,000 l/min and a monitor inlet pressure of 9 bar.

Note: The jet throw depends on a number of variables such as wind direction, type and concentration of foam and the condition of the monitor water ways and nozzle.

For throw and height calculations at different inlet pressures and flows and for different nozzles and angles refer to the Angus interactive electronic data sheet.

The Angus monitor range includes bronze models up to 8,500 l/min and stainless steel models up to 30,000 l/min. Most models are available with lever or gearbox control, automatic oscillation or with hydraulic or electric remote control. All are suitable for use where explosive atmospheres may be present.

Angus is a company assessed to ISO 9001:2000

